

- LAMBTON HIGH SCHOOL -

# Year 11 2024

PARENT INFORMATION EVENING



RESPECT | EXCELLENCE | INTEGRITY | RESPONSIBILITY



**Principal – Mr James Ostermann**





**Deputy Principal – Mr Nick Willis**



# Welcome to Stage 6

- ROSA
- SLC (Senior Learning Centre)
- “ELEVATE”
- Assessment
- BYOD
- Mentoring – study skills focussed
- “Study Periods”
- “Flexible Attendance”
- YONDR
- Uniform
- L’Extra
- P & C – 2<sup>nd</sup> Tuesday each Month

**RESPECT**

**RESPONSIBILITY**



# **CORE VALUES**



## **Stage 6**

**INTEGRITY**

**EXCELLENCE**

**RESPECT**

**RESPONSIBILITY**



**YONDR**



**INTEGRITY**

**EXCELLENCE**



# YONDR



## INTEGRITY

## EXCELLENCE





# YONDR



**Phones off or in airplane mode in pouches** while on school grounds

**Pouches remain in student bags**

**Parents can contact students** via the administration office

**Students can contact parents** via School Phones in Emergencies

**Pouches unlocked at the end of the day** at exit points; supported by staff

**Velcro pouches can be issued** to support students with medical needs

**INTEGRITY**

**EXCELLENCE**

**RESPECT**

**RESPONSIBILITY**



**UNIFORM**



**INTEGRITY**

**EXCELLENCE**

**RESPECT**



**UNIFORM**



**EXCELLENCE**

# RESPECT



# UNIFORM



**Correct uniform each day** unless otherwise communicated

**Leather enclosed shoes required for participation in practical subjects**

**Uniform Shop Onsite:** MON 1 – 4PM; TUES 8 – 11AM; THURS 8 – 11AM

**Renew:** Wednesdays 8.15 – 9am; [lisa.beacher@det.nsw.edu.au](mailto:lisa.beacher@det.nsw.edu.au)

**Speak with your child's Deputy Principal** if you need financial support

**Out of uniform notes from deputies** for those unavoidable mishaps

# EXCELLENCE

**RESPECT**

**RESPONSIBILITY**



**ATTENDANCE**



**INTEGRITY**

**EXCELLENCE**

**RESPONSIBILITY**



**ATTENDANCE**



**INTEGRITY**

# RESPONSIBILITY



# ATTENDANCE



**Renewed DoE Focus** – ‘Every Day Matters’; >95% attendance goal

**Students attend every day and every lesson they are well** (including 0/7)

**Please explain all absences** within 7 days

**Students attend SLC during ALL study periods** unless they have more than 3 consecutive study periods OR no lessons before/after study period

**Please contact your child’s year adviser with attendance concerns**

# INTEGRITY

# RESPECT

# RESPONSIBILITY



# SENIOR STUDENTS



## Lambton High School Senior Student Responsibilities Year 11

### *Responsibilities*

| <b>As</b>                    | <b>We expect you to...</b>   |
|------------------------------|--|
| <i>School leaders:</i>       | be a positive role model for juniors; be actively involved in school life.   |
| <i>School ambassadors:</i>   | wear your uniform with pride; conduct yourself appropriately in public.  |
| <i>Senior students:</i>      | meet all course requirements; attend all classes; complete all assessment tasks, work in a diligent and sustained manner, model efficient use of study time. |
| <i>Mature learners:</i>      | manage your learning time effectively; set goals and work towards them; support the learning of others.  |
| <i>Responsible citizens:</i> | contribute positively to the welfare of others in our school community.  |

*These responsibilities apply here at Lambton HS and in the community.*

### *Motor Vehicles*

**Emailed Agreement:**

# INTEGRITY

# EXCELLENCE



**RESPECT**

**RESPONSIBILITY**



**ASSESSMENT**



**INTEGRITY**

**EXCELLENCE**

**RESPONSIBILITY**



**ASSESSMENT**



**EXCELLENCE**

# RESPONSIBILITY



# ASSESSMENT



**Students familiarise themselves** with yearly assessment planner

**Students check canvas** for assessment blocks and notifications

**Thoroughly read notification;** clarify with class teachers where needed

**Apply ELEVATE explicit study techniques**

**Thoroughly engage with teacher feedback** following the task

# EXCELLENCE

# Assessment Blocks and Planner



Note: all weeks are approximately the scheduled time depending on individual timetables.

**LAMBTON HIGH SCHOOL**

Young Road Lambton NSW 2299  
 Telephone: 4952 3977 – Fax: 4956 2429  
 Email - [lambton.h.school@det.nsw.edu.au](mailto:lambton.h.school@det.nsw.edu.au)  
 Website - <http://lambton.h.school.nsw.gov.au>  
 Principal: Darren Mitten (rel)

## YEAR 11 2023 ASSESSMENT BLOCK 1

| WEEK 9  | PERIOD             | Monday 20 March             | Tuesday 21 March              | Wednesday 22 March                 | Thursday 23 March         | Friday 24 March  |
|---------|--------------------|-----------------------------|-------------------------------|------------------------------------|---------------------------|--|
|         | Task due by 9:30AM |                             |                               | English (Advanced, Standard, EALD) | Economics                 | Engineering Studies  |
| 0       |                    |                             |                               |                                    |                           |  |
| 1       |                    |                             |                               |                                    | Business Studies (Davies) |  |
| 2       |                    | Biology (Hill)              |                               | Ancient History                    | Business Studies (Keath)  |  |
| 3       |                    | Biology (Lorang/Toumazos)   |                               |                                    |                           | Physics Earth and Environmental                              |
| 4       |                    |                             |                               |                                    |                           | Physics Earth and Environmental Society and Culture (Micali) |
| 5       |                    |                             |                               | CAPS (Cossetini)                   |                           | Society and Culture (Ling)                                   |
| 6       |                    |                             |                               | CAPS (Bertram)                     |                           |  |
| WEEK 10 | PERIOD             | Monday 27 March             | Tuesday 28 March              | Wednesday 29 March                 | Thursday 30 March         | Friday 31 March  |
|         | Task due by 9:30AM | Maths (Advanced, Standard,) | Multimedia Drama              | Food Tech                          | Textiles                  | Maths Extension English Extension                            |
| 0       |                    |                             |                               |                                    |                           |  |
| 1       |                    |                             |                               |                                    |                           |  |
| 2       |                    | Marine Studies              |                               | Studies of Religion                |                           |  |
| 3       |                    | Music                       |                               |                                    |                           | Modern History   |
| 4       |                    |                             | Drama Legal Studies (Steiner) |                                    |                           |  |
| 5       |                    |                             | Legal Studies (McMellon)      |                                    |                           |  |
| 6       |                    |                             |                               |                                    |                           |  |
| 7       |                    |                             |                               |                                    |                           |  |

\* All submission tasks are to be submitted to the DP Offices by 9:30AM unless otherwise stated.  
 \* Music practical component will be individually scheduled and detailed on the assessment notification  
 Food Technology practical component will be individually scheduled - details on assessment notification.

## Assessment Blocks 2024

| Week | Term 1                 | Term 2                                    | Term 3   |
|------|------------------------|---|--|
| 1    |                        |   |  |
| 2    |                        | Retail Work Placement                     |  |
| 3    |                        | Hospitality Work Placement                |  |
| 4    |                        |   | ASSESSMENT PERIOD THREE  |
| 5    |                        | ASSESSMENT PERIOD TWO                     |  |
| 6    |                        |   | Visual Art Body of Work  |
| 7    |                        | English Advanced, Standard, Studies, EALD |  |
| 8    |                        |   | Mon Wk 8: IT Wood Project and Design & Technology – Multimedia Submissions<br>Tues - Fri Wk 8 and 9 FINAL EXAMINATIONS |
| 9    | ASSESSMENT PERIOD ONE: | Sport, Lifestyle and Recreation Task 2    |  |
| 10   |                        | English Extension 1                       |  |
| 11   |                        |   |  |



# Assessment Schedule Sample

## Ancient History



| Course Components   | Syllabus Weightings | Task 1   | Task 2   |   |
|---|---------------------|--|--|---|
| Task Type   |                     | Reconstructing the Past<br>Source based topic test | Historical Investigation<br>Research, Written<br>Response, and<br>Annotated Bibliography | Y1<br>• Sh<br>• Extended responses            |
| Timing  |                     | Term 1<br>Week 9/10                                | Term 2<br>Week 5/6   | Term 3<br>Week 9/10                           |
| Assessment Component  |                     | IN CLASS   | SUBMIT   | EXAMINATION                                   |
| Knowledge and understanding of course content                                   | 40%                 | 10%  | 5%   | 25%   |
| Historical skills in the analysis and evaluation of sources and interpretations | 20%                 | 15%  |  | 5%  |
| Historical inquiry and research   | 20%                 |  | 20%  |   |
| Communication of historical understanding in appropriate forms                  | 20%                 | 5%   | 5%   | 10%   |
| Weightings  | 100%                | 30%  | 30%  | 40%   |
| Outcomes Assessed   |                     | AH11-4, AH11-6,<br>AH11-7, AH11-9                  | AH11-2, AH11-3,<br>AH11-8, AH11-9  | AH11-1, AH11-5,<br>AH11-6, AH11-7,<br>AH11-10 |

### Course Outcomes

#### Knowledge and Understanding

- AH11-1 describes the nature of continuity and change in the ancient world
- AH11-2 proposes ideas about the varying causes and effects of events and developments
- AH11-3 analyses the role of historical features, individuals and groups in shaping the past
- AH11-4 accounts for the different perspectives of individuals and groups
- AH11-5 examines the significance of historical features, people, places, events and developments of the ancient world

#### Skills

- AH11-6 analyses and interprets different types of sources for evidence to support an historical account or argument
- AH11-7 discusses and evaluates differing interpretations and representations of the past
- AH11-8 plans and conducts historical investigations and presents reasoned conclusions, using relevant evidence from a range of sources
- AH11-9 communicates historical understanding, using historical knowledge, concepts and terms, in appropriate and well-structured forms
- AH11-10 discusses contemporary methods and issues involved in the investigation of ancient history



## Assessment Task

|                 |  |
|-----------------|--|
| FACULTY         | Creative And Performing Arts                     |
| COURSE          | Year 11 Music 1                                  |
| TASK NUMBER     | 1 - Performance and Musicology Task              |
| TASK WEIGHT     | 25% Musicology<br>10% Performance<br>(35% Total) |
| DUE DATE        | Term 1 Week 9/10                                 |
| CONTACT TEACHER | Mr Gibson  |

## Outcomes Assessed

- P1: performs music that is characteristic of the topics studied  
 P2: observes, reads, interprets and discusses simple musical scores characteristic of topics studied  
 P5: comments on and constructively discusses performances and compositions  
 P6: observes and discusses concepts of music in works representative of the topics studied  
 P9: performs as a means of self-expression and communication

## Task Description

## Part A: Performance (10%) – marked out of 20

Your performance piece can come from any genre you like, as long as you can find/create musical notation to use for Part B as mentioned below. Your performance piece should meet the following criteria:

- Must be at least 3 minutes long, but no longer than 5 minutes.
- You can perform solo, or with live accompaniment, however, if the song is meant to be accompanied, then it needs to be accompanied
- If you are using a backing track, your part can not be on the track. For example, if you are singing, there can not be any lead vocals on the track, if you are playing bass guitar, you can not have any bass guitar on the track, etc.
- Everyone must be ready to perform on Monday 22 March 2021 (T1W9) – I will select the order of performances at random. If you are not ready to perform when you are called, then you will receive zero marks and an N-award warning will be sent home.
- Marking criteria for the performance is attached. It will be marked out of a total of 20.

## Part B: Musicology Written Submission (25%) – marked out of 20

You are to present a musicological discussion about the piece you are going to perform in Part A which is focused on the Concepts of Music. This will take the form of a 1-2 page written analysis of your piece. In order to achieve this you will need to do the following:

1. Analyse your performance piece thoroughly using 2 or 3 of the Concepts of Music as a framework.
2. Be able to discuss the most interesting features of your performance piece. This includes discussing any accompanying parts as well as your own.
3. You must include reference to some form of musical notation in your discussion. This could be internet tablature for drums, guitar, bass, etc., or it could be traditional sheet music (which you can easily purchase from www.musicnotes.com or any other online source – only a couple of dollars each).

You will submit this via CANVAS before 9:30am on Thursday 1 April 2021. You can hand it in earlier if you like. If you get stuck then email it to me: jarrod.gibson5@det.nsw.edu.au

# Assessment Notification Sample (Canvas)



## Submission Requirements

## Part A: Performance

- Your submission will be recorded live into CANVAS during your performance as part of your feedback.

## Part B: Musicology Written Submission

- Submission....
- Include instructions on how to submit this task in Canvas (pref video)
- Unpacking of the task - if you recorded the unpacking of the task, place a link to the video here

## Resources and References

- www.musicconcepts.com.au (past papers, audio excerpts, marking guidelines and scaffolds to help you structure your responses)
- hschub.nsw.edu.au/creative-arts-courses/music-hsc-course

There are guides for both the Concepts of Music and how to structure a musicological response, and the practical exam process in that link.

## Feedback provided

Individual feedback for this task will be provided within 2 weeks of submission, in the form of:

- Canvas rubric
- Canvas annotations
- Written Feedback

## Registration of Receipt

[Click this hyperlink to complete the registration of receipt for this task](#)

*LHS assessment tasks can be submitted anytime before 9:30am on the due date.*

*Assessments submitted late may receive a zero mark, pending illness & Misadventure approval*

# Illness/Misadventure Process

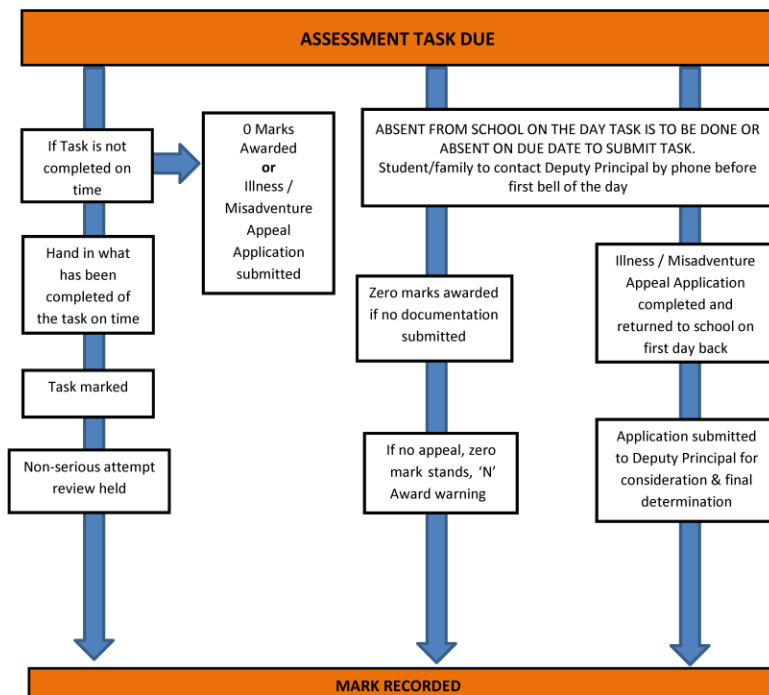


LAMBTON HIGH SCHOOL

Light The Way

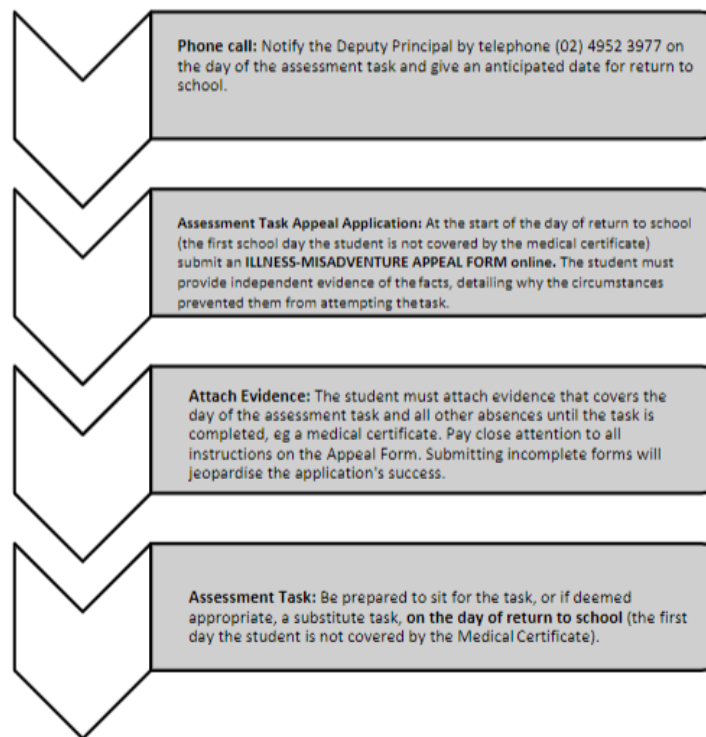
Telephone 4952 3977 Fax 4956 2429  
 Email – lambton-h.school@det.nsw.edu.au  
 Principal – Mr G. Bennett

## ASSESSMENT TASK FLOWCHART



## MISSED ASSESSMENT TASK DUE TO ILLNESS OR MISADVENTURE

Lambton High School has a process in place to support all students who experience illness or misadventure in relation to assessment tasks. It is important that all students and families familiarise themselves with the illness/misadventure process. See the flow chart below. For more information refer to the Lambton High School Assessment Policy.



# Illness Misadventure Forms:



## ILLNESS-MISADVENTURE APPEAL -EXAMPLE



### Year 11 Illness / Misadventure Application

Lambton High School

#### Student Details

|                         |                       |
|-------------------------|-----------------------|
| Student Name *          | Your name:            |
| Student Email Address * | @education.nsw.gov.au |
| Year Group *            |                       |

#### Assessment Task Information

|                                    |                        |
|------------------------------------|------------------------|
| Faculty of Assessment Task Class * | Select faculty         |
| Date of Assessment Task *          | DD/MM/YYYY             |
| Classroom Teacher *                | E.G - Mr Milton        |
| Subject Name *                     | E.G - English Standard |
| Task Type *                        |                        |

#### Reasoning

Please provide more information about your illness or misadventure circumstances.

Please note that these items are not grounds for misadventure:

- Technology failure.
- Failure to remember due date.
- Workplace commitments

|  |   |
|--|---|
| Reasoning *  | Provide some background on the circumstances here.      |
| Supporting Documentation                                 | Select file... <input type="button" value="Browse..."/> |
| Please upload any justification or evidence as required. |   |

#### Outcome

What do you expect to happen as a result of submitting this form?

|           |         |
|-----------|---------|
| Outcome * | Outcome |
|-----------|---------|

#### Signature

Sign here to declare all information you have provided is truthful and correct. \*

|           |
|-----------|
| Signature |
|-----------|

Please sign in the box above using your mouse or finger (on mobile devices) - [Help](#)

67

## Year 11 2024 HOMEPAGE

2024

Home

Announcements

Assignments

Discussions

Marks

People

Pages

Files

Syllabus

Outcomes

Rubrics

Quizzes

Modules

BigBlueButton

Collaborations

New Analytics

Item Banks

Studio

MultiTool

Settings

LAMBTON HIGH SCHOOL
LIGHT THE WAY

RESPECT
EXCELLENCE
INTEGRITY
RESPONSIBILITY

# YEAR 11

Year Adviser: Mr Nash

Year 11 Deputy Principal: Mr Willis

## MENTORING

## DOWNLOADS

### Assessment Information

### Student Support

### Subject Selection

### Academic Tips

### Technology Assistance

### Illness Misadventure Process

### Illness Misadventure Application

### Sentral Daily Notices



# BYOD



- BYOD device requirements can be found on our school website.
- Mobile phones or ipads are not to be used as a BYOD device
- Damage to devices is not the responsibility of the School
- We encourage you to support our use of BYOD. For those students who do not have access to their own device, the School has laptop banks.
- LHS is using CANVAS as the digital platform to notify students of upcoming and present assessment events. It is highly encouraged that all Year 11 students have their own device in 2024

# Communication: Platforms



- **Website**: *assessment and course booklets, technology links*
  - *Uniform Shop: [daylight schoolwear](#); Renew: [lisa.beacher@det.nsw.edu.au](mailto:lisa.beacher@det.nsw.edu.au)*
- **Short Takes**: *LHS Newsletter; featuring several key events and achievement each week*
- **Facebook**: *LHS Official and CAPA ( [/LambtonHS](#) ; [/LambtonHighSchoolCAPAFaculty](#) )*
- **Sentral**: *timetables, daily student announcements (roll call) – sporting teams, photos etc*
  - *Attendance text messages – both absent and below 90%*
- **Schoolbytes**: *emailed permission notes, sports choices, illness misadventure forms*
- **Canvas**: *all students and parent (observer) access assessment notifications, some course materials, marks, class teacher communication – “notifications on” generates email and app notifications*



# Communication: Staff



## Typically All Students/Families:

- **Administration office:** *attendance – absence explanations, exemption forms and general enquiries*
- **Parent Learning Groups:** Weeks 5 and 10 each Term: wellbeing, careers, canvas plus more!
- **Parent Teacher Night:** 24<sup>th</sup> June Yrs 10, 11, 12; 5<sup>th</sup> August Yrs 7, 8, 9
- **Class Teachers:** *as per timetable for class specific concerns*
- **Year Adviser:** Mr Nash - *first contact for general enquiries and student concerns*
- **Careers Adviser:** Mick Mckinley - *through Y10 careers lessons and by appointment and Senior Study Stage 6*

# Additional Supports



## Some Students/Families

- **Head Teacher Wellbeing:** Mrs Birrell (*incl health care plans & Attendance*)
- **School Counsellors:** Tanya Cullen, Djcynta Middleton, Marcus Geale (*Liaising with external supports*)
- **Deputy Principal Years 8 & 11:** Nick Willis

## Learning Support Staff (referral via LST/Year Adviser):

- **LASTS:** Karen Sandland, Robyene Lewis *Learning Support & Exam Provisions*
- **Student Support Officer:** Olivia Boglev  
*Promoting help seeking behaviours, developing social and emotional skills, building resilience & promoting positive relationships through individual/small group/whole school*
- **Boys Advisor:** Adam White; **Girls Advisor:** Sarah Smith

# Student Support Officer

- Student support officers (SSOs) work in schools to enhance the wellbeing and learning outcomes of students.
- Social Work background
- Member of the Wellbeing Team and works closely with the school counselling service

# Aims and Objectives

- Instilling and teaching help seeking behaviors in young people
- Helping students develop social and emotional skills
- Build resilience, coping skills and positive relationships
- Enhancing student learning and wellbeing outcomes

# HOW?

- Individual support
- Targeted small group interventions
- Whole school initiatives
- Support with referrals and access to services/resources



# L'Extra

- Homework club
- Thursday 3.05pm – 4.00pm in the library





# P & C



Meetings are held at **7.00pm**  
on the **second Tuesday of each month**,  
during school terms in the Library.

Next meeting is **Tuesday 13th March**



**Head Teacher Secondary Studies (rel.) –  
Mr Jim Keath**

# Higher School Certificate



To be eligible for the HSC a student is required to:

- Study a minimum of 12 units in the Preliminary course and a minimum of 10 units in the HSC course.
- Study at least 6 units from Board Developed Courses including at least 2 units of English
- Study at least three courses of 2 units value or greater
- Study at least four subjects
- At most 6 units of courses in Science in Preliminary (can be 7 in HSC Year of Study)
- Must have meet Minimum Standards for Reading, Writing and Numeracy

# ATAR



To be eligible:

- Qualify for a HSC and have at least 10 Units of Board Developed Courses
- This can include at most 2 units of Board Developed Category B courses (Industry Curriculum Framework VET courses, English Studies, Mathematics General 1)



# Year 11 RoSA Grading

- At the end of successful completion of Year 11 study students attain a Year 11 Record of School Achievement (RoSA) grade.
- Students will receive an A-E Grade for each of the subjects they have successfully completed in Year 11.
- If students choose to leave at the conclusion of Year 11 (Temporary Permanent Employment 25+, Vocational Training/Alternate Education Programs, Apprenticeships/Traineeships, 17+ Years Old) they can access this RoSA via their Students Online account.

# Senior Learning Centre (SLC)



- A learning space to effectively use timetabled study periods (individual/group)
- Students engage in meaningful work to complete individually (homework, revision, summaries)
- Access to a wide range of study resources to improve academic performance
- Access to experienced HSC staff and resources to enhance organisational and preparation skills
- Assist students with decisions related to study patterns (ATAR, non-ATAR, SBAT, VET courses)
- Provide information and advice related to post-school pathways (ATAR, TAFE applications, University applications, employment opportunities)

# Senior Learning Centre (SLC)



- **Staff**

- Mr Jim Keath (HT Secondary Studies rel.)
- Mrs Toni Pearce (Senior Studies Teacher)
- Mr Mick McKinley (Careers Adviser)

- **Individual Learning Space**

- Study carrels/cubicles for individual study

- **Shared Learning Space**

- Round/island tables and bench seats for group and/or individual study



# Senior Learning Centre (SLC)



- **Mentoring Program**

- Focusing on development of knowledge and skills related to areas such as: study skills, academic resources, HSC/ATAR requirements, post-school pathways and well-being



- **Elevate Education Program**

- Externally provided study skills program embedded across Stage 6

- **HSC Tutoring Program**

- Subject-specific tutoring program delivered by former Lambton HS students achieving Band 6 HSC results







# Preparing students for Preliminary Courses

Some strategies/ideas/questions that parents/carers can use to assist student organisation for Year 11:

- Is your home study area organised?
- Do you have a day folder with subject dividers for daily school use?
- Subject folders organised at home?
- A4 reinforced loose leaf paper
- Yellow paper and yellow lined noted pads for summaries
- Coloured pens/highlighters for note taking



**Mr Mick McKinley**

**Email: [michael.mckinley@det.nsw.edu.au](mailto:michael.mckinley@det.nsw.edu.au)**



Apprenticeships/Traineeships

SBAT program

EVET Coordinator

Scholarships

USI

White Card courses

Speed Careering

Referee/References

Uni Open days

RSA/RCG courses

Employment applications

TAFE open days

Volunteering

AQF guidance

UAC & University offers

TAFE Taster courses

TAFE and College transition

UAC and University applications

Work experience programs

## Lambton High School Careers Adviser

Subject selections

Career Expos

ADF/Academy

Tailored careers lessons for students

NESA requirements/Eligibility

Excursions

Guest presenters

STW individual interviews with all students

Cover Letters/Resumes/Interview techniques

Industry Visits

UNI Early Entry and Schools Recommendation Schemes

Undertaking careers interest and analysis of students



**Lambton  
High School  
Careers**

86  
**What is the ATAR?**  
78  
**How is it calculated**  
94  
91  
88

Produced by:  
The University of Sydney  
www.uosydney.edu.au

## Lambton High School Careers

Our aim is to provide you with all the latest information that will help you make decisions about your future career and your life beyond school.

You can use this site to locate University, TAFE and any other type of course across Australia, get information about the HSC, search for job vacancies and much more. Feel free to drop into the Careers Office if you have any questions.

UAC Course Search

Message Board

Facebook



# Main areas of Careers in Yr11

- Work Experience
- TAFE YES program
- White Card
- Employment

# Investigating Post School Education Options



Access your potential



-   
UAC PIN and application number
-   
Undergraduate offers
-   
Admission criteria
-   
ATAR
-   
Access and scholarships
-   
Key dates



TAFE NSW

Study with us

Enrol

Why TAFE NSW?

Support and services

About

View Courses



SKILLS THAT WORK



EXPLORE HUNDREDS OF FULLY SUBSIDISED\* **JOBTRAINER SHORT COURSES.**

ENROL NOW

### Find a course

Search courses - E.g. business, nursing, accounting.



[find courses near me](#)

find courses by campus

Explore our course areas



About 533,000,000 results (1.27 seconds)



Rating Hours

Hours or services may differ

Forsythes Training (RTO) Newcastle

5.0 (6) · Training centre
Newcastle West NSW · (02) 4922 0122
Open · Closes 4:30PM
On-site services · Online classes

Website Directions

Intercept Group Training

4.3 (23) · Training centre
Broadmeadow NSW · 1300 302 444
Open · Closes 4:30PM

Website Directions

Novaskill Newcastle

3.7 (6) · Training centre
Broadmeadow NSW · (02) 4906 6700
Open · Closes 5PM
On-site services · Online classes

Website Directions

View all





# Questions?





Thank you for your  
attendance

- LAMBTON HIGH SCHOOL -